

PS02 SERIE® HAND WASH STAND

PRODUCT INSTALLATION INSTRUCTIONS TECHNICAL MANUAL

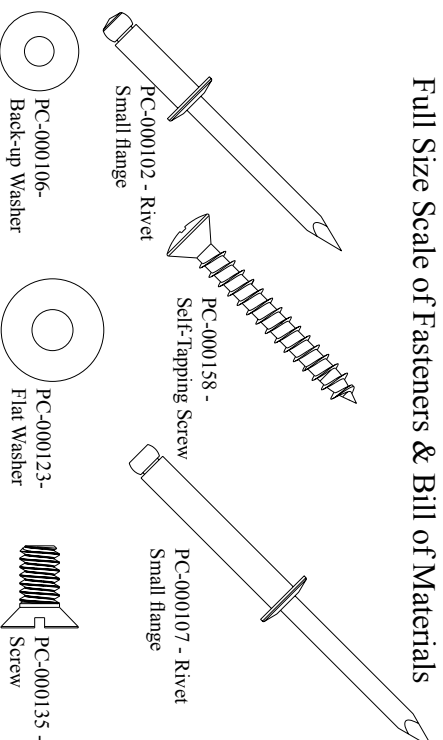
Height	41 in.	104 cm.
Width	18 in.	46 cm.
Depth	9 in.	23 cm.
Tank Capacity	16 gal.	61 ltr.
Pump Capacity (per stroke)	2 fl. oz	59.14 ml
Number of Single Dispenses	1024	1024
Weight Empty	16 lb.	7.2 kg.
Weight Full	154 lb.	69 kg.

TOOLS REQUIRED FOR INSTALLATION

- Phillips, cross-head screwdriver
- Tape measure
- 1-1/8" hole saw
- 3/8" Hex-key wrench
- 5/8" Hex-key wrench
- Drill with 13/64" bit
- Rivet Gun

We recommend reading through the manual prior to proceeding with installation or service. All references to left and right throughout the manual are as viewed from the front of the restroom.

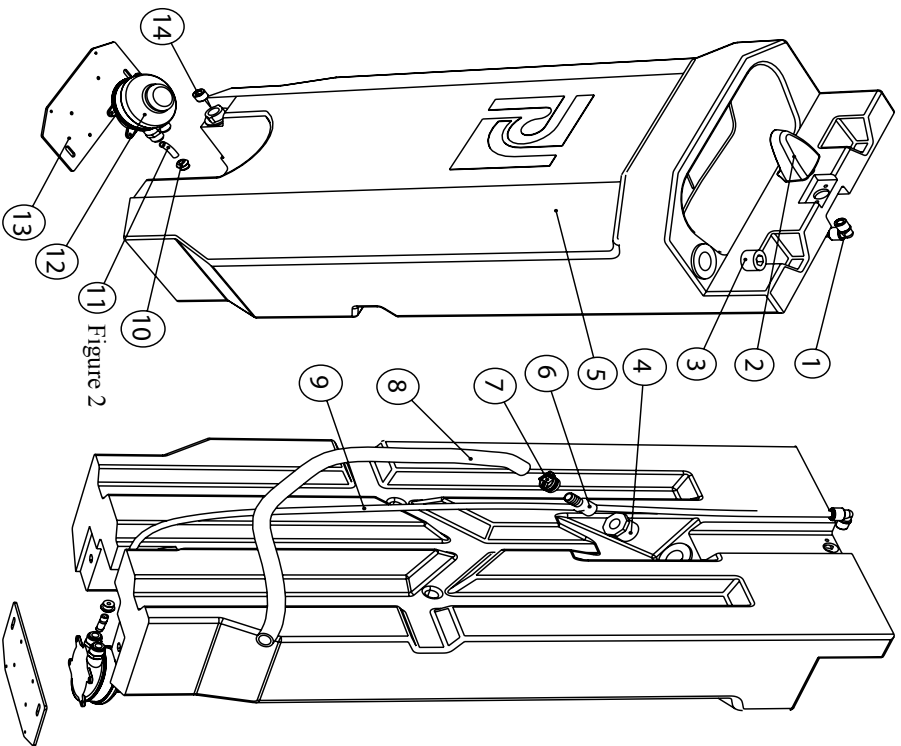
Full Size Scale of Fasteners & Bill of Materials



ITEM	PART #	DESCRIPTION	REQ
1	PC-000339	Elbow, 3/8" - fresh water out at spigot	1
2	PC-000581G	Spigot, water tap	1
2a*	PC-000107	Rivet, small flange - spigot to bowl	2
2b*	PC-000106	Washer, 3/16", back-up - spigot to bowl	2
3	PC-000554	1" Plastic plug	1
4	PC-000371	1/2" x 1" Plastic bushing	1
5	PS02-0001	Sink Tank	1
6	PC-000333	Straight adapter, 1/2" mpt x 5/8" barb	1
7	PC-000351	Hose Clamp - drain hose to straight adapter	1
8	CH63-036	Drain Hose, 5/8" x 36" long	1
9	CT38-041	Tube, 3/8" x 41" long - fresh water pump to spigot	1
10	PC-000415	Uniseal, 3/8" tube to sink tank	1
11	CT38-003	Tube, 3/8" x 3" long - intake water port	1
12	PC-000600	Baby Foot Pump	1
12a*	PC-000102	Rivet, small flange - pump to mounting plate	4
12b*	PC-000106	Washer, 3/16", back-up - pump to mounting plate	4
13	PS02-0003	Mounting Plate	1
13a*	PC-000135	Screw - mounting plate to tank	2
14	PC-000551	Plug, 1/2" MPT - drain	1
**	PC-000782	Decal, Not for Drinking or Cooking	1
**	PC-000783	Decal, Transport	1
**	PC-000790	Decal, Foot Pump	1

Items with an * are not shown but are used with that item number
 ** Denotes required decals not shown

Parts Drawing - Exploded View



General Product Information

This self-contained hand wash sink is designed for installation in the P103 SERIES portable restroom. It will fit in many other similar types of portable restrooms including the PJN3 Series restroom. It is supplied fully assembled including all fasteners for installation and will fit on either sidewall. One person will be required for installation with the exception of some assistance to hold the back-up washers when riveting the sink to a sidewall.

PS02 Manual - November - 2003

Page 3 of 4

Installation - Maintenance

Before installing the sink, a 1-1/8" drain hole that will accept the drain hose must be cut in the waste tank. This hole should be located on the top left or right front edge of the waste tank approximately 16" up from the base skid.

Place the sink flat against the sidewall, making sure the drain hose is routed through one of the moulded in channels along the back. There are two square recesses to the left and right of the water spigot (see figure 1), to attach the sink to the sidewall drill a 13/64" hole into the center of both the square recesses. Fasten to the sidewall from the interior by putting a PC-000106 washer at the head of a PC-000107 rivet and have someone hold a PC-000123 and a PC-000106 washer on the rivet stem on the exterior.

Attach sink to base skid: Drive two PC-000158 self-tapping screws in the predrilled holes in the sink mounting plate.

Installation is complete.

IMPORTANT DECALS

NOT FOR COOKING OR DRINKING, required by law in certain areas of the U.S. Other geographical areas require that the materials used to manufacture the sinks comply with the U.S. Federal Food and Drug Administration (FDA) guidelines 21 CFR 175.300 (resins), 177.1520 (olefin polymers) and 178.3297 (colorants for polymers). The materials also comply with the U.S. Public Health Service Drinking Water Standards, 42 CFR part 72 and U.S. Environmental Protection Agency Internm Primary Drinking Water Regulations 40 CFR part 141.

HANDS FREE SINK, instruction for user to use foot pump to operate the sink.

UNIT MUST BE DRAINED BEFORE TRANSPORTING, reminds service operator to empty the sink before transporting.

CLEANING - Use a mild soap to clean all surfaces and component parts. Minor scratches and abrasions can be lightly sanded or scrubbed with a mild abrasive cleaner containing calcium carbonate. Hypochlorite bleach and detergents, such as Soft Scrub. Rinse the cleaned area and buff with an automotive paste type wax.

WINTERIZING - Drain all water from the sink. Depress the foot pump to clear lines. Flush tank with a solution of chlorine and water.

PS02 Manual - November - 2003

Page 4 of 4